

# CHASSIS COMPONENTS

## Float Tank



- Heavy 3/16" durable plastic

9.804-042.0

| Part No.    | Orig. No. | Description                     |
|-------------|-----------|---------------------------------|
| 9.804-042.0 | 890880    | 2.5 gal w/o Adapter             |
| 8.706-642.0 | 890760    | 4.0 gal w/ Cover                |
| 8.706-643.0 | 952721    | 8.0 gal, 7-3/4" x 20-3/4" x 15" |

## Fuel Tanks



9.803-533.0



9.803-534.0

| Part No.    | Orig. No. | Description             |
|-------------|-----------|-------------------------|
| 9.802-081.0 | 952724    | 6 gal 15.5" x 10" x 10" |
| 9.803-533.0 | 952730    | 11 gal - Black          |
| 9.803-534.0 | 952731    | 11 gal - Red            |
| 8.706-614.0 | 952733    | 8 gal - Black           |
| 9.803-535.0 | 817312    | Cap w/ Gauge - Fuel     |
| 9.803-536.0 | 817313    | Cap w/ Gauge - Gas      |

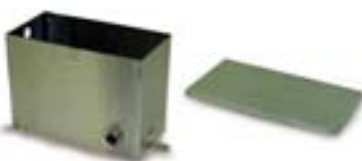
## Molded Plastic Float Tanks



- Molded polypropylene
- 7 liter size: 13" x 5" x 6"
- 1 gallon size: 10" x 5" x 8"
- No holes for max flexibility
- 1 gallon tank has tight-fitting lid, included
- 7 liter tank lid is snap-on & sold separately

| Part No.    | Orig. No. | Description          |
|-------------|-----------|----------------------|
| 8.710-026.0 | 343002    | 7-Liter Tank Only    |
| 8.710-027.0 | 343003    | 7-Liter Tank Lid     |
| 8.710-028.0 | 343004P   | 1-Gallon Tank w/ Lid |

## Stainless Steel Float Tank



- Fully welded and water tight
- 2.8 gallon capacity
- 12" x 9" x 6"
- 16 gauge #303 stainless steel
- 1/2" full coupling (SS) inlet/outlet
- Convenient mounting tabs

| Part No.    | Orig. No. | Description                |
|-------------|-----------|----------------------------|
| 8.710-029.0 | 343006    | Stainless Steel Float Tank |
| 8.710-034.0 | 343016    | Stainless Steel Lid        |

## Plastic Fuel Tank



- 9 gallon black plastic tank
- 4" fuel neck
- 19-5/8" L x 12" W x 10" H
- Two 1/4" FPT ports in bottom

| Part No.    | Orig. No. | Description                     |
|-------------|-----------|---------------------------------|
| 8.710-139.0 | 344727    | 9 Gallon Fuel Tank              |
| 8.710-140.0 | 344728    | Plastic Fuel Cap, 2-1/4" Thread |

NOTE: Cap not included with tank

## Fuel Tanks



8.749-322.0



8.749-324.0



8.749-321.0



8.749-323.0

- Seamless one-piece construction of marine grade, UV-protected polyethylene
- Built-in reserve (When gauge reads Empty, tilt to access additional fuel!)
- Rugged fill neck cap with vent
- 90° fuel withdrawal fitting
- Easy-to-read sight gauge
- 4 shapes & capacities from which to choose

| Part No.    | Gallons | Height | Length | Width  |
|-------------|---------|--------|--------|--------|
| 8.749-322.0 | 6.5     | 10.0"  | 21.50" | 13.75" |
| 8.749-324.0 | 9.0     | 10.0"  | 29.5"  | 13.75" |
| 8.749-321.0 | 12.0    | 14.5"  | 23.0"  | 14.0"  |
| 8.749-323.0 | 12.0    | 11.5"  | 24.0"  | 18.0"  |

## 9 Gallon Fuel Tank



- 9 gallon black plastic tank
- Strap or Bolt mount (4/5/16" inserts in bottom)
- Metal inset 3/8" inlet/return lines
- Black - Crosslinked PE
- Vented fuel cap
- Filler neck doesn't extend beyond tank wall
- Compact Size: 19-3/4" L x 12" W x 10-1/2" H

| Part No.    | Orig. No. | Description        |
|-------------|-----------|--------------------|
| 8.710-142.0 | 344735    | 9 Gallon Fuel Tank |

NOTE: Includes fuel cap

## Fuel Caps



- For gas or diesel fuel tanks
- Fits standard 2-1/4" fuel necks

| Part No.    | Orig. No. | Description             |
|-------------|-----------|-------------------------|
| 8.710-137.0 | 344725    | Fuel Cap                |
| 8.701-700.0 | 091520    | Fuel Cap with Gauge 10" |

## Battery Boxes w/ Cover, Marine Style

Protect Batteries on Pressure Washers, Boats or other Industrial Equipment.



- Attractive molded polypropylene
  - Complete with hold-down cleats and strap for cover
- Small:**  
L: 8-1/2" W: 6" H: 8-1/2"  
**Large:** L: 11-1/4"  
W: 7-3/4" H: 10-3/4"

| Part No.    | Orig. No. | Description |
|-------------|-----------|-------------|
| 9.802-090.0 | 813169    | Small Box   |
| 9.802-075.0 | 813150    | Large Box   |

## Rubber Parts



| Part No.    | Orig. No. | Description                               |
|-------------|-----------|---|
| 9.802-064.0 | 859815    | Grommet, Nozzle Holder                    |
| 9.802-066.0 | 615527    | Bumper                                    |
| 8.706-557.0 | 616018    | Bellows, Leg Boot                         |
| 9.802-067.0 | 830587    | Bumper Pad, Engine                        |
| 9.802-069.0 | 691877    | Handle Grip                               |
| 8.706-745.0 | 829620    | Plug, Hole Plastic                        |
| 9.803-046.0 | 784446    | Mount, Rubber Vibration                   |
| 8.706-525.0 | 891040    | Mount, Rubber Vibration 203/8-25 std      |
| 8.706-553.0 | 891041    | Mount, Rubber Vibration 60 duro           |
| 8.706-524.0 | 891048    | Mount, Rubber Vibration 1-3/8" dia x 3/4" |
| 8.706-554.0 | 891050    | Mount Rubber                              |
| 8.706-556.0 | 891051    | Mount Vibration                           |

## Caster Wheels



8.711-908.0      9.802-275.0      9.802-276.0

- Easy pivot of machines
- Locking or non-locking
- 360 degree swivel

| Part No.    | Orig. No. | Description        |
|-------------|-----------|--------------------|
| 8.711-908.0 | 936697    | 3" Grey            |
| 9.802-275.0 | 983042    | 5" Swivel          |
| 9.802-276.0 | 983043    | 5" Swivel w/ Brake |

## Complete Wheels



8.711-901.0      9.802-270.0      8.712-762.0

- High quality pneumatic, and semi pneumatic
- Fits 5/8" shaft, except 4-0305 fits 1/2" shaft

| Part No.    | Orig. No. | Description                           |
|-------------|-----------|---------------------------------------|
| 8.711-901.0 | 4-0304    | 10" Mag                               |
| 9.802-270.0 | 600255    | 10" Steel Rim w/ Tube                 |
| 8.712-762.0 | 480115    | 10" White Steel Rim, 3/4" Hub w/ Tube |

## Interchangeable Bearings & Hub Caps



- Two required for each wheel
- Fits all wheels of the above wheels

| Part No.    | Orig. No. | Description          |
|-------------|-----------|----------------------|
| 8.700-484.0 | 076504    | 5/8" Bore Bearing    |
| 8.700-486.0 | 076505    | 3/4" Bore Bearing    |
| 8.700-485.0 | 076504P   | 5/8" Nylon Bearing   |
| 9.802-783.0 | 817322    | Hub Cap - 5/8" Black |
| 8.718-851.0 | 817323    | Hub Cap - 1/2" Red   |

## Hand Tote II



- Strong 1" square steel tubing
  - Lightweight – only 8 pounds!
  - Rubber mounting feet for stability
  - Use with either gas or electric direct drive units
  - Compact size – 12" W x 19" H x 17" D
  - Durable gloss black polyurethane finish
- Electric:** 1.5 HP - 5.0 HP 56C Motor
- Gas Eng:**  
4.0 HP - 6.5 HP Honda  
3.0 HP - 6.0 HP B&S / B&S Vanguard engines

| Part No.    | Orig. No. | Description  |
|-------------|-----------|--------------|
| 8.905-567.0 | 565230X   | Hand Tote II |